



#LJ101Y **YOUTH** YOUTH LACROSSE JERSEY

- Contrast Color Extrme Pin Dot Mesh Sleeve Ends
- Entire Jersey Is Constructed With Fabrics That Give Maximum Weight Reduction And Abrasion Resistance Fofr Durability And Performance Of Fabrics
- Staight Hemmed Bottom And Sleeve Ends
- Nfhs Legal
- Waist Length Jersey With Our Elusive Cut--Slightly Tighter Fit And Short Sleeves
- High Abrasion Resistant Front Body Fabric

COLORS

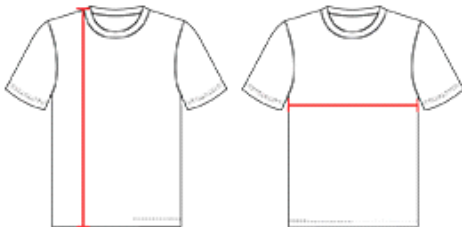


SPECIFICATIONS

| Color | S | M | L | XL |
|---|------|------|------|------|
| Piece Weight measured in pounds | 0.51 | 0.51 | 0.51 | 0.51 |
| Case Count # of units per case | 90 | 90 | 80 | 80 |

HOW TO MEASURE

These product specifications reference a product's measurements. For sizing information and guidance, please reference our sizing charts.



BODY LENGTH

Measured on the front from the shoulder/neck intersection to the bottom of the garment.

CHEST WIDTH

Measured across the chest, 1" below the armhole seam.