



#210300 **GIRLS'**

B-CORE GIRLS' 1/4 ZIP

- 100% Polyester moisture management/antimicrobial performance fabric
- Contrast Self-fabric inner collar with 6" locking zipper
- Badger sport shoulder for maximum movement
- Thumbhole in sleeves - Open bottom
- Double-needle hemmed bottom

COLORS

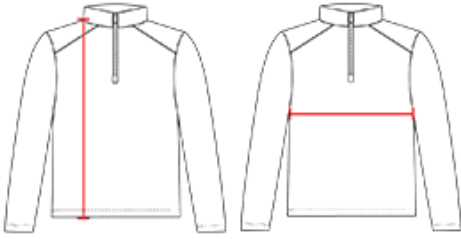


SPECIFICATIONS

Color	XS	S	M	L	XL
Piece Weight measured in pounds	0.28	0.28	0.28	0.28	0.28
Spec Body Length measured in inches	19	20	21	22	23
Spec Chest Width measured in inches	13	13	14	15	16
Case Count # of units per case	36	36	36	36	36

HOW TO MEASURE

These product specifications reference a product's measurements.
For sizing information and guidance, please reference our sizing charts.



BODY LENGTH

Measured on the front from the shoulder/neck intersection to the bottom of the garment.

CHEST WIDTH

Measured across the chest, 1" below the armhole seam.