



#411100 **WOMEN'S** B-CORE WOMEN'S RACERBACK HOOD TANK

- 100% Polyester moisture management/antimicrobial performance fabric
- Self-fabric hood with drawcord
- A-line body
- Racerback w/ room to print
- Badger heat seal logo on lower left front body
- Double-needle hem

COLORS

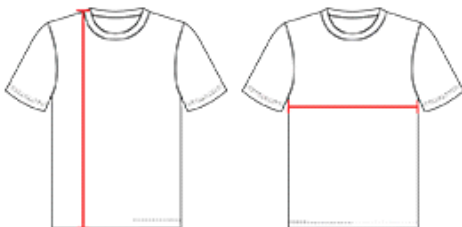


SPECIFICATIONS

| Color | XS | S | M | L | XL | 2XL |
|---|------|------|------|------|------|------|
| Piece Weight measured in pounds | 0.36 | 0.36 | 0.36 | 0.36 | 0.36 | 0.36 |
| Spec Body Length measured in inches | 25 | 26 | 27 | 28 | 29 | 30 |
| Spec Chest Width measured in inches | 14.5 | 16 | 17.5 | 19 | 20.5 | 22 |
| Case Count # of units per case | 36 | 36 | 36 | 36 | 36 | 36 |

HOW TO MEASURE

These product specifications reference a product's measurements. For sizing information and guidance, please reference our sizing charts.



BODY LENGTH

Measured on the front from the shoulder/neck intersection to the bottom of the garment.

CHEST WIDTH

Measured across the chest, 1" below the armhole seam.