

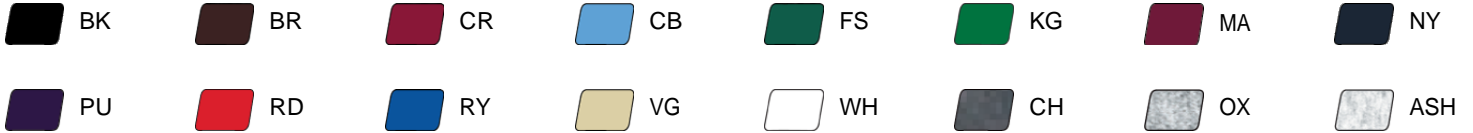


# #125400 UNISEX

## HOODED SWEATSHIRT

- 9.5 oz. Ringspun 60% cotton/ 40% Polyester
- Badger sport paneled shoulder for maximum movement
- Spandex reinforced rib knit cuffs and waistband
- Twill taped neckline
- Front pouch pocket with headset opening
- Embroidered Badger logo on left sleeve
- V-Patch front and half moon back with room for embellishment

### COLORS

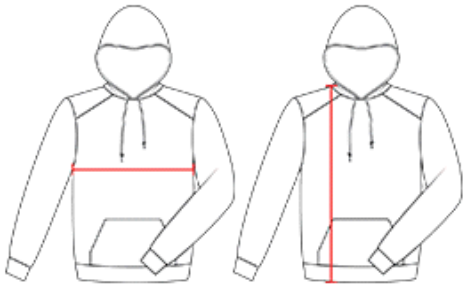


### SPECIFICATIONS

Color	XS	S	M	L	XL	2XL	3XL	4XL
<b>Piece Weight</b> measured in pounds	1.60	1.60	1.60	1.60	1.60	1.60	1.60	1.60
<b>Spec Body Length</b> measured in inches	28.5	29	29.5	30	30.5	31	31.5	32
<b>Spec Chest Width</b> measured in inches	19	20	22	24	26	28	30	32
<b>Case Count</b> # of units per case	24	24	24	24	24	24	12	12

### HOW TO MEASURE

These product specifications reference a product's measurements.  
For sizing information and guidance, please reference our sizing charts.



**BODY LENGTH**

Measured on the front from the shoulder/neck intersection to the bottom of the garment.

**CHEST WIDTH**

Measured across the chest, 1" below the armhole seam.