

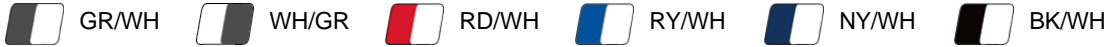


#264100 **YOUTH**

SIDELINE L/S YOUTH PULLOVER

- 100% Lightweight woven Polyester fabric
- Badger heat seal logo on left sleeve
- Badger Sport paneled shoulder for maximum movement
- Drop tail hem
- Front pouch pocket and sleeve pocket with zip and headset opening
- Wind and Water Resistant
- Printed stripe design on back body
- Self-fabric collar with 8" locking zipper
- Open bottom with bungee cord and hidden toggle on left side seam

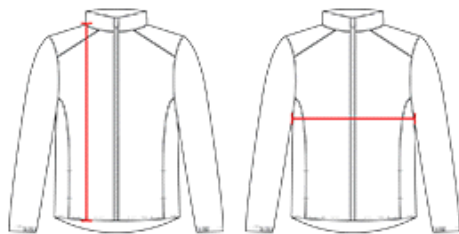
COLORS



SPECIFICATIONS

Color	XS	S	M	L	XL
Piece Weight measured in pounds	0.39	0.39	0.39	0.39	0.39
Spec Body Length measured in inches	18 1/2	20 1/2	22 1/2	24 1/2	26 1/2
Spec Chest Width measured in inches	16	17	18	19	20
Case Count # of units per case	36	36	36	36	36

HOW TO MEASURE



These product specifications reference a product's measurements. For sizing information and guidance, please reference our sizing charts.

BODY LENGTH

Measured on the front from the shoulder/neck intersection to the bottom of the garment.

CHEST WIDTH

Measured across the chest, 1" below the armhole seam.