



#765000 **MEN'S** SOFT SHELL SPORT JACKET

- 90% Polyester/10% Spandex soft shell fabric
- Badger sport shoulder for maximum movement
- Self-fabric collar with full length locking zipper
- Front covered zip pockets with headset opening
- Cuffs feature smooth hem front with elastic on back half
- Bungee cord and hidden toggle on left side
- Embroidered badger logo on left sleeve
- Drop-tail hem

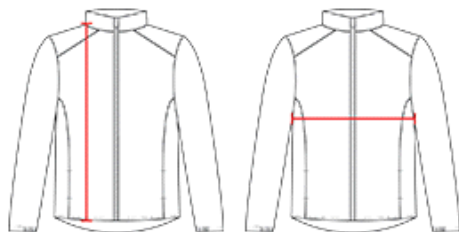
COLORS



SPECIFICATIONS

| Color | XS | S | M | L | XL | 2XL | 3XL | 4XL |
|---|------|------|------|------|------|------|------|------|
| Piece Weight measured in pounds | 1.50 | 1.50 | 1.50 | 1.50 | 1.50 | 1.50 | 1.50 | 1.50 |
| Spec Body Length measured in inches | 26 | 27 | 28 | 29 | 30 | 31 | 32 | 33 |
| Spec Chest Width measured in inches | 21.5 | 22 | 23 | 24 | 25 | 26 | 27 | 28 |
| Case Count # of units per case | 24 | 24 | 24 | 24 | 24 | 24 | 12 | 12 |

HOW TO MEASURE



These product specifications reference a product's measurements. For sizing information and guidance, please reference our sizing charts.

BODY LENGTH

Measured on the front from the shoulder/neck intersection to the bottom of the garment.

CHEST WIDTH

Measured across the chest, 1" below the armhole seam.