



#418600 **WOMEN'S** DIGITAL WOMEN'S V-NECK TEE

- Badger heat seal logo on left sleeve
- Self-fabric collar
- Badger Sport paneled shoulder for maximum movement
- Double-needle hem
- 100% Sublimated Polyester moisture management/antimicrobial fabric

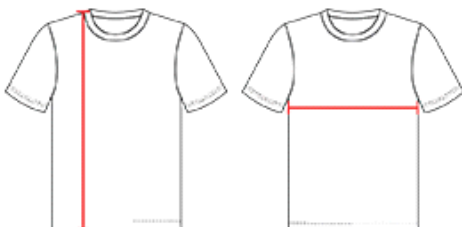
COLORS



SPECIFICATIONS

Color	XXS	XS	S	M	L	XL	2XL
Piece Weight measured in pounds	0.36	0.36	0.36	0.36	0.36	0.36	0.36
Spec Body Length measured in inches	23	25	26	27	28	29	30
Spec Chest Width measured in inches	15	15	17	19	21	23	25
Case Count # of units per case	36	36	36	36	36	36	36

HOW TO MEASURE



These product specifications reference a product's measurements. For sizing information and guidance, please reference our sizing charts.

BODY LENGTH

Measured on the front from the shoulder/neck intersection to the bottom of the garment.

CHEST WIDTH

Measured across the chest, 1" below the armhole seam.