



#436200 WOMEN'S PRO HEATHER WOMEN'S V-NECK TEE

- Badger heat seal logo on left sleeve
- Self-fabric collar
- 100% Heathered Polyester moisture management fabric
- Badger Sport paneled shoulder for maximum movement
- Double-needle hem

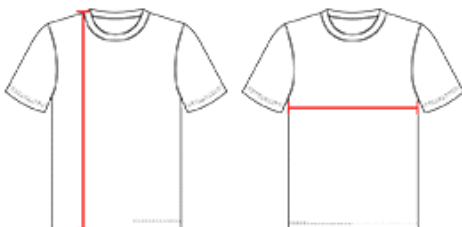
COLORS



SPECIFICATIONS

| Color | XS | S | M | L | XL | 2XL |
|---|------|--------|------|------|------|------|
| Piece Weight measured in pounds | 0.36 | 0.36 | 0.36 | 0.36 | 0.36 | 0.36 |
| Spec Body Length measured in inches | 25 | 26 | 27 | 28 | 29 | 30 |
| Spec Chest Width measured in inches | 16 | 17 1/2 | 19 | 21 | 23 | 25 |
| Case Count # of units per case | 36 | 36 | 36 | 36 | 36 | 36 |

HOW TO MEASURE



These product specifications reference a product's measurements. For sizing information and guidance, please reference our sizing charts.

BODY LENGTH

Measured on the front from the shoulder/neck intersection to the bottom of the garment.

CHEST WIDTH

Measured across the chest, 1" below the armhole seam.