



# # 550000 ADULT C2 FLEECE HOOD

- 8 oz. 60% Cotton/40% Polyester Ringspun neece fabric
- Two-ply hood with drawcord
- Spandex reinforced rib knit cuós and waistband
- Pouch front pocket with headset opening

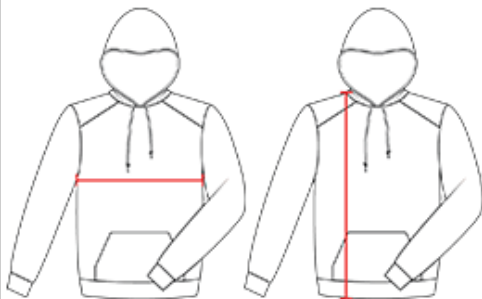
## COLORS



## SPECIFICATIONS

| COLOR   | XS     | S    | M      | L    | XL     | 2XL  | 3XL    | 4XL  |
|---|--------|------|--------|------|--------|------|--------|------|
| <b>Piece Weight</b><br>measured in pounds     | 1.10   | 1.10 | 1.10   | 1.10 | 1.10   | 1.10 | 1.10   | 1.10 |
| <b>Spec Body Length</b><br>measured in inches | 27 1/2 | 28   | 28 1/2 | 29   | 29 1/2 | 30   | 30 1/2 | 31   |
| <b>Spec Chest Width</b><br>measured in inches | 19     | 20   | 22     | 24   | 26     | 28   | 30     | 32   |
| <b>Case Count</b><br># of units per case      | 24     | 24   | 24     | 24   | 24     | 24   | 12     | 12   |

## HOW TO MEASURE



These product specimcations reference a product's measurements.  
For sizing information and guidance, please reference our sizing charts.

### BODY LENGTH

Measured on the front from the shoulder/neck intersection to the bottom of the garment.

### CHEST WIDTH

Measured across the chest, 1" below the armhole seam.