



# # 496700 WOMEN'S TRI-BLEND WOMEN'S FANTEE

- 65% Polyester/ 25% Mercerized Cotton/ 10% Rayon moisture management/antimicrobial performance fabric
- Badger sport shoulder for maximum movement
- Contrast striping on sleeve
- Double-needle hem
- Badger heat seal logo on left sleeve

## COLORS

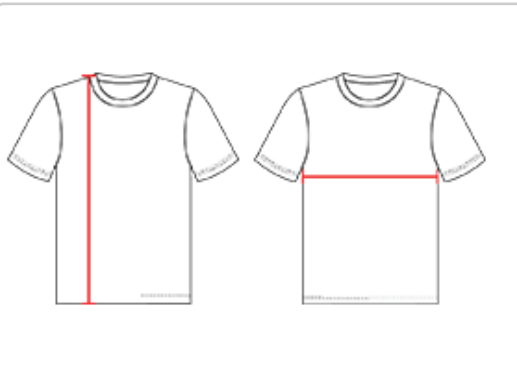


## SPECIFICATIONS

**Piece Weight**  
measured in pounds

**Case Count**  
# of units per case

## HOW TO MEASURE



These product specifications reference a product's measurements. For sizing information and guidance, please reference our sizing charts.

### BODY LENGTH

Measured on the front from the shoulder/neck intersection to the bottom of the garment.

### CHEST WIDTH

Measured across the chest, 1" below the armhole seam.