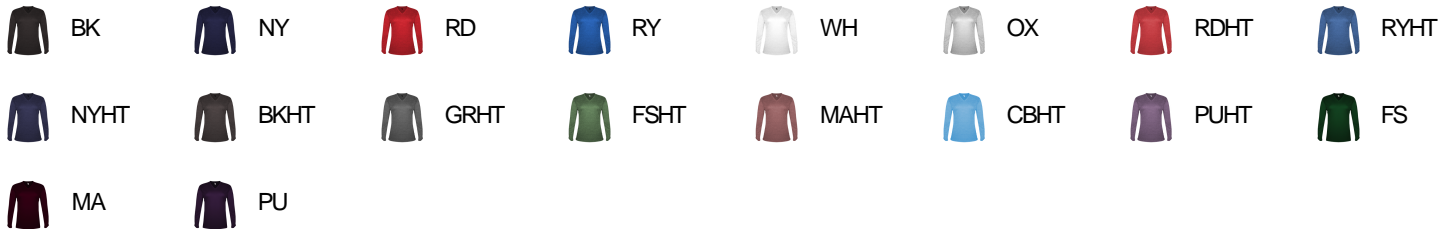




# # 496400 WOMEN'S TRI-BLEND LADIESL/STEE

- 65% Polyester/25% Mercerized Cotton/10% Rayon moisture management/antimicrobial performance fabric
- Badger Sport paneled shoulder for maximum movement
- Self-fabric collar
- Double-needle hem
- Badger heat seal logo on left sleeve

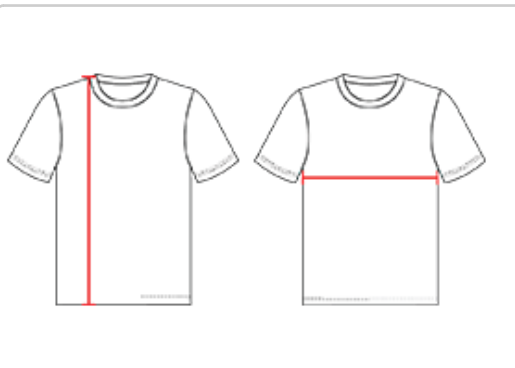
## COLORS



## SPECIFICATIONS

COLOR	XS	S	M	L	XL	2XL
<b>Piece Weight</b> measured in pounds	0.00	0.00	0.00	0.00	0.00	0.00
<b>Case Count</b> # of units per case	1	1	1	1	1	1

## HOW TO MEASURE



These product specifications reference a product's measurements. For sizing information and guidance, please reference our sizing charts.

### BODY LENGTH

Measured on the front from the shoulder/neck intersection to the bottom of the garment.

### CHEST WIDTH

Measured across the chest, 1" below the armhole seam.