



# # 550100 MEN'S C2 FLEECE CREW

- 8 oz. Ringspun 60% cotton/40% Polyester fabric
- Spandex reinforced rib knit cuffs and waistband
- Twill taped neckline
- V-Patch front and half moon back with room for embellishment

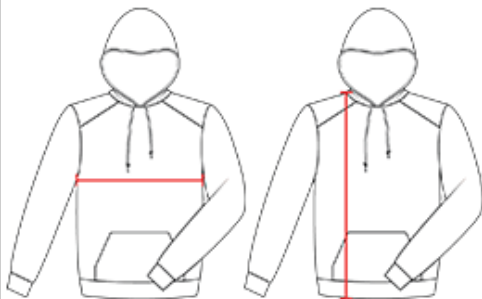
## COLORS



## SPECIFICATIONS

COLOR	XS	S	M	L	XL	2XL	3XL	4XL
<b>Piece Weight</b> measured in pounds	1.10	1.10	1.10	1.10	1.10	1.10	1.10	1.10
<b>Spec Body Length</b> measured in inches	28	28.5	29	29.5	30	30.5	31	31.5
<b>Spec Chest Width</b> measured in inches	18	20	22	24	26	28	30	32
<b>Case Count</b> # of units per case	24	24	24	24	24	24	12	12

## HOW TO MEASURE



These product specifications reference a product's measurements. For sizing information and guidance, please reference our sizing charts.

### BODY LENGTH

Measured on the front from the shoulder/neck intersection to the bottom of the garment.

### CHEST WIDTH

Measured across the chest, 1" below the armhole seam.