



496600 WOMEN'S TRI-BLEND LADIES' RACERBACK

- 65% Polyester/25% Cotton/10% Rayon moisture management performance fabric
- Super soft hand
- Single-needle bound neck & armhole
- Double-needle hem
- A-line body

COLORS

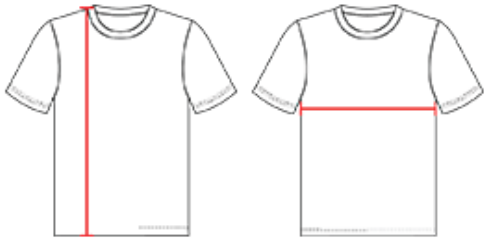


SPECIFICATIONS

	XS	S	M	L	XL	2XL
Piece Weight measured in pounds	0.38	0.38	0.38	0.38	0.38	0.38
Spec Body Length measured in inches	25	26	27	28	29	30
Spec Chest Width measured in inches	14.5	16	17.5	19	20.5	22
Case Count # of units per case	36	36	36	36	36	36

HOW TO MEASURE

These product specifications reference a product's measurements.
For sizing information and guidance, please reference our sizing charts.



BODY LENGTH

Measured on the front from the shoulder/neck intersection to the bottom of the garment.

CHEST WIDTH

Measured across the chest, 1" below the armhole seam.