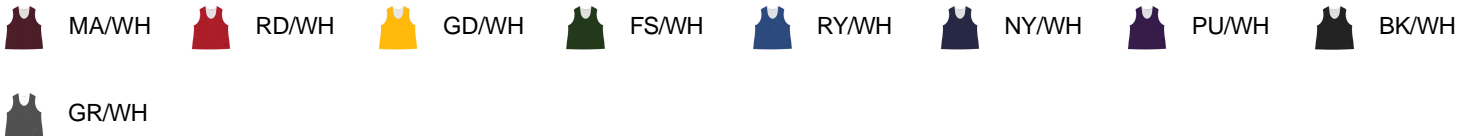




# # 526000 YOUTH C2 REVERSIBLE YOUTH MESH PINNIE

- 100% Polyester Pro Mesh Fabric
- Double layered mesh
- Fully Reversible
- Double-needle hem
- Each layer individually hemmed for easy screening

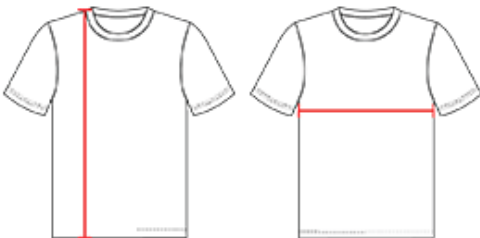
## COLORS



## SPECIFICATIONS

	S/M	L/XL
<b>Piece Weight</b> measured in pounds	0.36	0.36
<b>Case Count</b> # of units per case	1	1

## HOW TO MEASURE



These product specifications reference a product's measurements. For sizing information and guidance, please reference our sizing charts.

### BODY LENGTH

Measured on the front from the shoulder/neck intersection to the bottom of the garment.

### CHEST WIDTH

Measured across the chest, 1" below the armhole seam.