



419900 MEN'S B-CORES/S1/4ZIP

- Badger heat seal logo on left sleeve
- Badger Sport paneled shoulder for maximum movement
- 100% polyester moisture management/antimicrobial performance fabric
- Contrast zipper and inner collar
- Double-needle hem
- Self-fabric collar with 8" locking zipper

COLORS

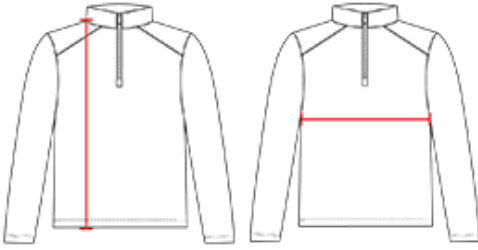


SPECIFICATIONS

	XS	S	M	L	XL	2XL	3XL	4XL
Piece Weight measured in pounds	0.36	0.36	0.36	0.36	0.36	0.36	0.36	0.36
Spec Body Length measured in inches	26	27	28	29	30	31	32	33
Spec Chest Width measured in inches	18	19	21	23	25	27	29	31
Case Count # of units per case	36	36	36	36	36	36	24	24

HOW TO MEASURE

These product specifications reference a product's measurements.
For sizing information and guidance, please reference our sizing charts.



BODY LENGTH

Measured on the front from the shoulder/neck intersection to the bottom of the garment.

CHEST WIDTH

Measured across the chest, 1" below the armhole seam.