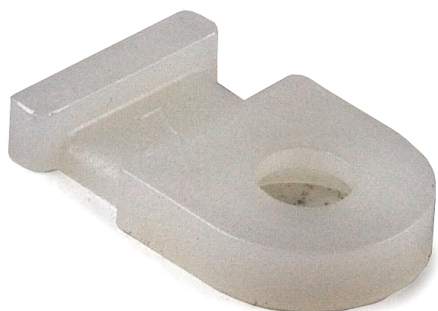


Specification Sheet

Part Number: MB19C2



Compact size for areas with limited mounting space.
Simple to install with a screw or rivet.

Single hole attachment with two-way entry for cable tie.

Cable Tie Anchor Mount, .50" x .312" .13" Hole Dia, .1" Max Tie Width, PA66, Natural, 100/pkg

Article Number 151-00226

Type MB1

Color Natural (NA)

Quantity Per bag

Product Description These cable tie mounts are compact in size. They are designed for simple yet robust installation particularly in areas with limited space. They pair with a cable tie for mounting applications including telecom equipment, switchgear and control cabinets.

Short Description Cable Tie Anchor Mount, .50" x .312" .13" Hole Dia, .1" Max Tie Width, PA66, Natural, 100/pkg

Global Part Name MB1-PA66-NA

Length L (Imperial)	0.5
Length L (Metric)	12.7
Fixation Method	Screw Mounting and Rivet
Width W (Imperial)	0.312
Width W (Metric)	7.92
Cable Ties	T18
Height H (Imperial)	.13
Height H (Metric)	3.30
Cable Tie Width Max (Imperial)	0.1
Cable Tie Width Max (Metric)	2.54
Mounting Hole Diameter D (Imperial)	0.13
Mounting Hole Diameter D (Metric)	3.3 mm
Mounting Hole Diameter D Max (Metric)	3.3
Material	Polyamide 6.6 (PA66)

Material Shortcut	PA66
Flammability	UL 94 V-2
Halogen Free	Yes
Operating Temperature	-40°F to +185°F (-40°C to +85°C)
ROHS Compliant	Yes
Package Quantity (Imperial)	100
Package Quantity (Metric)	100
Customs Number	3926909988

© 2022 HellermannTyton. All Rights Reserved.

[Contact Us](#)

[RoHS/WEEE Compliance](#)

[Disclaimer](#)

[Terms and Conditions](#)