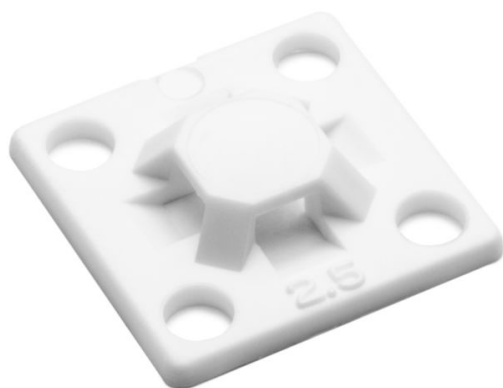


## Specification Sheet

Part Number: MB2.510C2



Screw Mount Cable Tie Base, .63" x .63", .10" Max Tie Width, .11" Hole Dia, PA66, White, 100/pkg

<b>Article Number</b>	151-28901
<b>Type</b>	MB2.5
<b>Color</b>	White (WH)
<b>Features &amp; Benefits</b>	<ul style="list-style-type: none"><li>•Compact size fits most mounting applications.</li><li>•Simple to install with a screw or rivet.</li><li>•Single hole attachment with two-way entry for cable tie.</li></ul>
<b>Quantity Per</b>	bag
<b>Product Description</b>	These cable tie mounts are compact in size. They are designed for simple yet robust installation. They pair with a cable tie for mounting applications including telecom equipment, switchgear and control cabinets.
<b>Short Description</b>	Screw Mount Cable Tie Base, .63" x .63", .10" Max Tie Width, .11" Hole Dia, PA66, White, 100/pkg

**Global Part Name**

MB2.5-PA66-WH

**Length L (Imperial)**

0.625

**Length L (Metric)**

15.9

**Fixation Method**

Screw Mounting and Rivet

**Width W (Imperial)**

0.625

**Width W (Metric)**

15.9

**Cable Ties**

T18

**Height H (Imperial)**

.13

**Height H (Metric)**

3.30

**Cable Tie Width Max (Imperial)**

0.1

**Cable Tie Width Max (Metric)**

2.54

**Mounting Hole Diameter D (Imperial)**

0.11

**Mounting Hole Diameter D (Metric)**

2.8 mm

**Mounting Hole Diameter D Max (Metric)**

2.8

**Material**

Polyamide 6.6 (PA66)

**Material Shortcut**

PA66

**Flammability**

UL 94 V2

**Operating Temperature (Metric)**

-40°F to +185°F (-40°C to +85°C)

**ROHS Complaint**

Yes

**UL Recognized (US)**

Yes

**UL Recognized (US and Canada)**

Yes

**Package Quantity(Imperial)**

100

**Package Quantity (Metric)**

100

**Customs Number**

3926909987