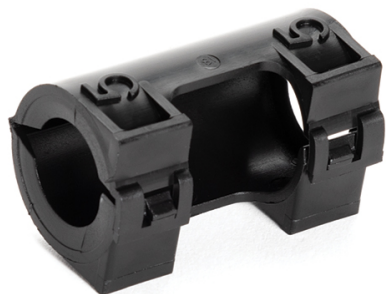


## Specification Sheet

Part Number: 167-00203



Hinged Convoluted Loom Tubing Breakout Fitting, L- 0.5" x R- 0.5", PP, Black, 1100/pkg

Article Number

167-00203

Type

CTHC-B55

Color

Black (BK)

### Features & Benefits

- Living hinge allows harness serviceability and reduces assembly time.
- Internal ribs affix to exterior of tubing which prevents slipping during tension or movement.
- Snap-on connection makes installations quick and easy and increases efficiencies in harness assembly.
- Junction point outlets offer additional areas to branch off wires and prevents wires from sliding or accidental removal from tubing.
- Improves aesthetics of assembled wire harness.
- No tools required to disassemble.

Quantity Per

carton

**Product Description**

Convolute Loom fittings are single piece hinged connectors that simply snap-on over slit and unslit loom tubing to secure wire branchouts or, connect different tubing diameters. The unique wrap around design makes installation easier and more efficient, while the unique junction points make easy branchouts that keep wires from sliding out of the tubing and eliminates need for secondary taping operation. The polypropylene material creates a sleek assembly and improves the appearance of the entire wiring assembly.

**Short Description**

Hinged Convolute Loom Tubing Breakout Fitting, L- 0.5" x R- 0.5", PP, Black, 1100/pkg

**Global Part Name**

CTHC-B55-PP-BK

**Diameter D (imperial)**

0.50

**Diameter D (metric)**

12.7

**Material**

Polypropylene (PP)

**Material Shortcut**

PP

**Flammability**

UL 94 HB

**Halogen free**

Yes

**Operating Temperature (Metric)**

-4°F to +194°F (-20°C to +90°C)

**ROHS Complaint**

Yes

**Package Quantity(Imperial)**

1100

**Package Quantity (Metric)** 1100

**Weight (Metric)** 5.4

**Weight (Imperial)** 12.0