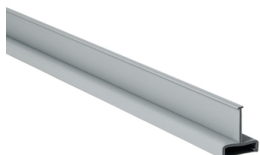


## Specification Sheet

Part Number: 181-00300



Dividers have continuous score lines for smooth breakouts. Top of the dividers has a double-sided lip which reduces the likelihood of wires falling out during installation.

Wiring Duct Divider, 1" High, PVC, Gray, 120 ft/carton

Article Number	181-00300
Type	DV1
Color	Gray (GY)
Quantity Per	carton
Product Description	Solid-Wall Dividers can be securely mounted into all types of HellermannTyton wiring duct to separate high and low voltage, thus reducing interference. The dividers simply snap or slide into the specially designed mount, instantly creating multiple channels within a single duct size.
Short Description	Wiring Duct Divider, 1" High, PVC, Gray, 120 ft/carton
Global Part Name	DV1-PVC-GY

Length L (Imperial)	6.0
Length L (Metric)	1.83
Width W (Imperial)	0.75
Width W (Metric)	19.05
Thickness T (Imperial)	0.05
Thickness T (Metric)	1.27
Height H (Imperial)	0.90
Height H (Metric)	22.90

Material Polyvinylchloride (PVC)

Material Shortcut PVC

Halogen Free No

UV Resistant (Yes/No) No

Operating Temperature +122°F (+50°C)

Reach Compliant (Article 33) No

ROHS Compliant Yes

Certification/Specification	UL EN 50085-2-3_1A EN 50085-1:2005 + A1:2013
UL Recognized (US)	Yes
Package Quantity (Imperial)	120.0
Package Quantity (Metric)	36.58
Customs Number	3925900000

## About HellermannTyton

HellermannTyton is a global manufacturer of cable management and identification solutions for automotive, solar, electrical, construction, industrial automation, broadband and other OEM markets. The company's integrated approach to product design, sustainability, production, quality assurance and delivery is optimized to benefit local and global customers. HellermannTyton operates in 39 countries, with North American headquarters in Milwaukee, Wisconsin. ([www.hellermann.tyton.com](http://www.hellermann.tyton.com)).

© 2023 HellermannTyton. All Rights Reserved.

[Contact Us](#)   [RoHS/WEEE Compliance](#)   [Disclaimer](#)   [Terms and Conditions](#)