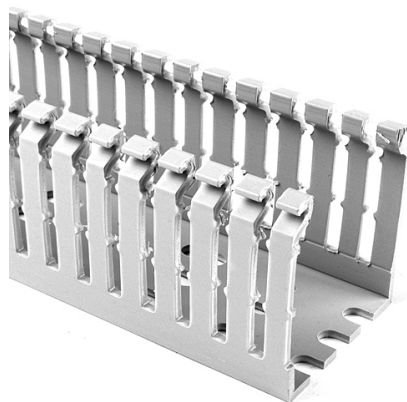


Specification Sheet

Part Number: 181-00636



High Density Slotted Wall Wiring Duct, 1.5" X 3", Adhesive, PVC, Gray, 120ft/Carton

Article Number	181-00636
Type	SLHDA1.5X3
Color	Gray (GY)
Features & Benefits	<ul style="list-style-type: none">• Narrow fingers reduce fanning of the wires to the terminal blocks, presenting a neater appearance.• Each finger is provided with a double restriction to hold wires in the bottom portion of the duct, allowing for easier installation.• Mounting holes are uniform in size to the solid and slotted wall duct, but are offered every 2 inches to accommodate compact designs and ease installation.
Quantity Per	carton

Product Description

Pro-Duct high density, slotted wall, wiring duct features narrow fingers, equaling a 2 to 1 finger ratio compared to standard slotted wiring duct. With the narrow fingers, compact designs and components are more easily accommodated.

Short Description

High Density Slotted Wall Wiring Duct, 1.5" X 3", Adhesive, PVC, Gray, 120ft/Carton

Global Part Name

SLHDA1.5X3-PVC-GY

Technical Description

Adhesive

Length L (Imperial)

6.0

Length L (Metric)

1.83

Width W (Imperial)

1.5

Width W (Metric)

38.1

Height H (Imperial)

3.07

Height H (Metric)

77.9

Mounting Hole Centers (Imperial)

2.0

Material

Polyvinylchloride (PVC)

Material Shortcut

PVC

Flammability

Self-Extinguishing

Halogen free

No

Operating Temperature (Metric)

+122°F (+50°C)

Reach Complaint(Article 33)

No

ROHS Complaint

Yes

Certification/Specification WEB

CSA EN 50085-1:2005 + A1:2013 UL EN 50085-2-3_1A

UL Recognized (US)

Yes

Package Quantity(Imperial)

120

Package Quantity (Metric)

36.58