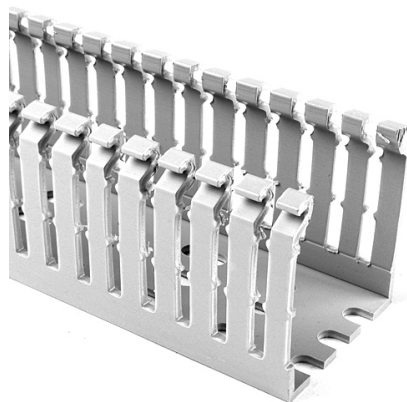


## Specification Sheet

Part Number: 184-11010



High Density Slotted Wall Wiring Duct, 1" x 1.5", Non-Adhesive, PVC, Gray, 120ft/Carton

|                                |   |
|--------------------------------|---|
| <b>Article Number</b>          | 184-11010   |
| <b>Type</b>                    | SLHD1X1.5   |
| <b>Color</b>                   | Gray (GY)   |
| <b>Features &amp; Benefits</b> | <ul style="list-style-type: none"><li>•Narrow fingers reduce fanning of the wires to the terminal blocks, presenting a neater appearance.</li><li>•Each finger is provided with a double restriction to hold wires in the bottom portion of the duct, allowing for easier installation.</li><li>•Mounting holes are uniform in size and are offered every 2 inches to accommodate compact designs and ease installation.</li><li>•Optional covers snap on and off easily, and are provided with a non-slip lining that insures the covers remain in place during vibration.</li></ul> |
| <b>Quantity Per</b>            | carton  |

### Product Description

Pro-Duct high-density slotted-wall wiring duct features narrow fingers, equaling a 2 to 1 finger ratio compared to standard slotted wiring duct. With the narrow fingers, compact designs and components are more easily accommodated.

**Short Description**

High Density Slotted Wall Wiring Duct, 1" x 1.5", Non-Adhesive, PVC, Gray, 120ft/Carton

**Global Part Name**

SLHD1X1.5-PVC-GY

**Technical Description**

Non-Adhesive

**Length L (Imperial)**

6.0

**Length L (Metric)**

1.83

**Width W (Imperial)**

1.0

**Width W (Metric)**

25.4

**Height H (Imperial)**

1.57

**Height H (Metric)**

39.9

**Mounting Hole Centers (Imperial)**

2.0

**Material**

Polyvinylchloride (PVC)

**Material Shortcut**

PVC

**Flammability**

Self-Extinguishing

**Halogen free**

No

**Operating Temperature (Metric)**

+122°F (+50°C)

**Reach Complaint(Article 33)**

No

**ROHS Complaint**

Yes

**Certification/Specification WEB**

CSA EN 50085-1:2005 + A1:2013 EN 50085-2-3\_1A UL

**UL Recognized (US)**

Yes

**Package Quantity(Imperial)**

120

**Package Quantity (Metric)**

36.58

**Customs Number**

3925900000