

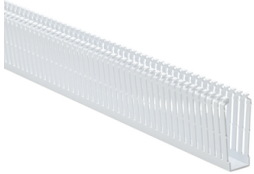
Specification Sheet

Part Number: 184-13002

Narrow fingers reduce fanning of the wires to the terminal blocks, presenting a neater appearance.

Each finger is provided with a double restriction to hold wires in the bottom portion of the duct, allowing for easier installation.

Mounting holes are uniform in size to the solid and slotted wall duct, but are offered every 2 inches to accommodate compact designs and ease installation.



High Density Slotted Wall Wiring Duct, 1" x 3", Adhesive, PVC, White, 30ft/Box

Article Number 184-13002

Type SLHDA1X3

Color White (WH)

Quantity Per box

Product Description HellermannTyton High Density Slotted Wall Duct features narrow breakaway fingers, designed at a 2-to-1 ratio compared to standard slotted duct, providing additional access for wire leads. Narrower fingers better accommodate compact designs and components. Pressure-sensitive, rubber-based adhesive backing aids in temporary positioning.

Short Description	High Density Slotted Wall Wiring Duct, 1" x 3", Adhesive, PVC, White, 30ft/Box
Global Part Name	SLHDA1X3-PVC-WH
Technical Description	Adhesive
Length L (Imperial)	6.0
Length L (Metric)	1.83
Width W (Imperial)	1.0
Width W (Metric)	25.4
Height H (Imperial)	3.07
Height H (Metric)	77.9
Mounting Hole Centers (Imperial)	2.0
Material	Polyvinylchloride (PVC)
Material Shortcut	PVC
Flammability	Self-extinguishing
Halogen Free	No

Operating Temperature	+122°F (+50°C)
Reach Compliant (Article 33)	No
ROHS Compliant	Yes
Certification/Specification	CSA EN 50085-1:2005 + A1:2013 UL EN 50085-2-3_1A
UL Recognized (US)	Yes
Package Quantity (Imperial)	30
Package Quantity (Metric)	9.14
Customs Number	3925900000

© 2021 HellermannTyton. All Rights Reserved.

[Contact Us](#)

[RoHS/WEEE Compliance](#)

[Disclaimer](#)

[Terms and Conditions](#)