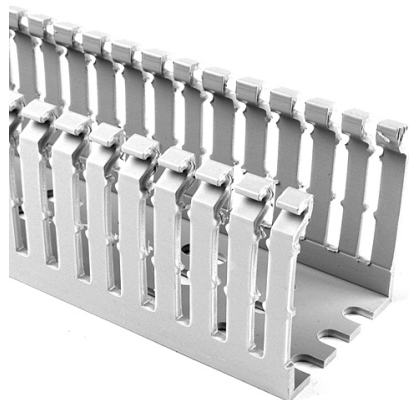


Specification Sheet

Part Number: 184-21002



High Density Slotted Wall Wiring Duct, 2" x 1", Non-Adhesive, PVC, Gray, 120ft/Carton

Article Number 184-21002

Type SLHD2X1

Color Gray (GY)

Features & Benefits

- Narrow fingers reduce fanning of the wires to the terminal blocks, presenting a neater appearance.
- Each finger is provided with a double restriction to hold wires in the bottom portion of the duct, allowing for easier installation.
- Mounting holes are uniform in size and are offered every 2 inches to accommodate compact designs and ease installation.
- Optional covers snap on and off easily, and are provided with a non-slip lining that insures the covers remain in place during vibration.

Quantity Per carton

Product Description	HellermannTyton Pro-Duct High-Density, Slotted-Wall Wiring Duct features narrow fingers equaling a 2 to 1 finger ratio compared to standard slotted wiring duct. With the narrow fingers, compact designs and components are more easily accommodated.
Short Description	High Density Slotted Wall Wiring Duct, 2" x 1", Non-Adhesive, PVC, Gray, 120ft/Carton
Global Part Name	SLHD2X1-PVC-GY
Technical Description	Non-Adhesive
Length L (Imperial)	6.0
Length L (Metric)	1.83
Width W (Imperial)	2.0
Width W (Metric)	50.8
Height H (Imperial)	1.06
Height H (Metric)	26.9
Mounting Hole Centers (Imperial)	2.0
Material	Polyvinylchloride (PVC)
Material Shortcut	PVC

Flammability	Self-Extinguishing
Halogen Free	No
Operating Temperature	+122°F (+50°C)
Reach Compliant (Article 33)	No
ROHS Compliant	Yes
Certification/Specification	EN 50085-1:2005 + A1:2013 EN 50085-2-3_1A CSA UL
UL Recognized (US)	Yes
Package Quantity (Imperial)	120
Package Quantity (Metric)	36.58
Customs Number	3925900000