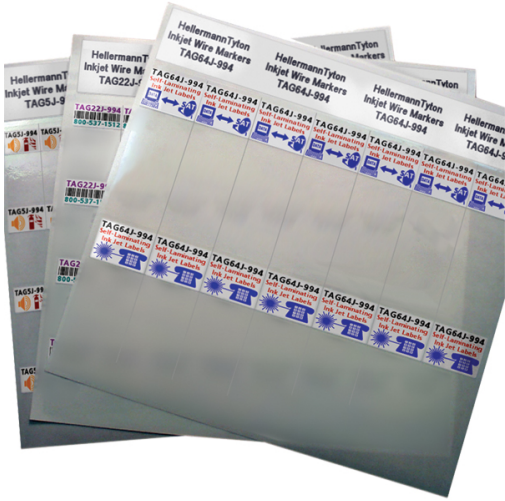


## Specification Sheet

Part Number: TAG51J-994



Ink Jet Label, Self-Laminating, 1.0" x .35" x .75", 64 Per Sheet, PET, White, 1000/pkg

**Article Number** 593-51994

**Type** TAG51J

**Color** White (WH)

### Features & Benefits

- HellermannTyton Ink Jet labels are sheet fed for easy loading and fast printing.
- Ink Jet labels are made with high temperature materials and adhesives so that they will not be affected by the high heat of laser printing.
- Ink Jet labels are printable using toner for long term UV exposure.
- Ink Jet labels come in a variety of label sizes and types to fit most applications.

**Quantity Per** pack

<b>Product Description</b>	HellermannTyton's ink jet self-laminating labels are smear resistant, allowing them to be handled immediately. The labels are made of a heat resistant 1mm polyester film with a strong acrylic based adhesive. The printable area is a special ink-receptive film that absorbs the ink as it is printed on an ink jet printer.
<b>Short Description</b>	Ink Jet Label, Self-Laminating, 1.0" x .35" x .75", 64 Per Sheet, PET, White, 1000/pkg
<b>Global Part Name</b>	TAG51J-994-WH
<b>Width W (Imperial)</b>	1.0
<b>Width W (Metric)</b>	25.4
<b>Bundle Diameter Min (Imperial)</b>	0.063
<b>Bundle Diameter Min (Metric)</b>	1.60
<b>Bundle Diameter Max (Imperial)</b>	0.087
<b>Bundle Diameter Max (Metric)</b>	2.20
<b>Thickness T (Metric)</b>	35.0
<b>Width of Liner (Metric)</b>	215.00
<b>Width of Liner (imperial)</b>	8.5
<b>Outside Diameter Max(Imperial)</b>	0.087
<b>Outside Diameter Min (metric)</b>	1.6

<b>Outside Diameter Min(Imperial)</b>	0.059
<b>Outside Diameter Max (metric)</b>	3.30
<b>Material</b>	Type 994, Polyethylene Terephthalate (994)
<b>Material Shortcut</b>	994
<b>Adhesive</b>	Acrylic
<b>Halogen free</b>	No
<b>Adhesive Operating Temperature</b>	-40°F to +302°F (-40°C to +150°C)
<b>Operating Temperature (Metric)</b>	-40°F to +302°F (-40°C to +150°C)
<b>Reach Complaint(Article 33)</b>	Yes
<b>ROHS Complaint</b>	Yes
<b>Package Quantity(Imperial)</b>	1000
<b>Package Quantity (Metric)</b>	1000
<b>Customs Number</b>	3919905060
<b>Labels per Column</b>	8

<b>Labels per Row</b>	8
<b>Weight (Metric)</b>	0.521
<b>Weight (Imperial)</b>	1.14