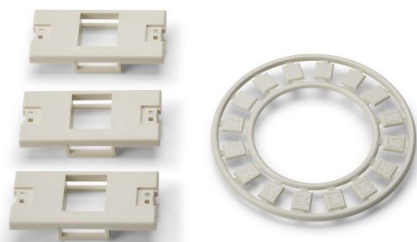


Specification Sheet

Part Number: FPMIFS-FW



Modular Faceplate Single Insert With Icons, ABS, Office White, 3/pkg

Article Number

854-35377

Type

FPMIFS

Color

Office White (OEWH)

Features & Benefits

- Faceplate inserts can be loaded and unloaded from the front.
- Single gang faceplate will accept 3U of inserts.
- Dual gang faceplate will accept 6U of inserts.

Quantity Per

bag

Product Description

HellermannTyton's line of modular faceplates provides a great amount of flexibility. Offered in single gang or dual gang styles, these faceplates can be used with flush or angled modules. Up to four angled ports can be installed in a single gang faceplate, providing an efficient solution for high capacity applications.

Short Description	Modular Faceplate Single Insert With Icons, ABS, Office White, 3/pkg
Global Part Name	FPMIFS
Technical Description	Modular Faceplate Single Insert With Icons, Office White
Variant	Modular
Material	Acrylonitrile Butadiene Styrene (ABS)
Material Shortcut	ABS
UL Listed (US and Canada)	Yes
UL Listed (US)	Yes
Package Quantity(Imperial)	3
Package Quantity (Metric)	3
Customs Number	3925900000

