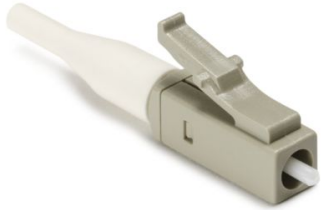


## Specification Sheet

Part Number: FCLC



Connector, Fiber Optic LC Multimode 900µm (Beige) Simplex (BTW)–Epoxy & Polish

**Article Number** 855-14200

**Type** FCLC

**Color** Beige (BGE)

**Features & Benefits**

- Use with epoxy or anaerobic adhesives for different applications or user preference.
- Pre-radiused zirconia ceramic ferrules provide precision installation.
- Meet ANSI/TIA/EIA 568-C standards.
- Meet ANSI/TIA/EIA 604 (FOCIS) connector interface requirements.

**Quantity Per** bag

<b>Product Description</b>	Our epoxy/anaerobic connectors are designed for field or factory installation, using either epoxy or anaerobic adhesives. These connectors are made with pre-radiused zirconia ceramic ferrules to provide precision alignment and installation. Epoxy adhesives provide affordable and reliable connections with lowest losses (less than 0.5dB). The epoxy can be allowed to set overnight or cured in an inexpensive oven. Anaerobic adhesives can be used with accelerators for faster curing
<b>Short Description</b>	Connector, Fiber Optic LC Multimode 900µm (Beige) Simplex (BTW)–Epoxy & Polish
<b>Global Part Name</b>	FCLC
<b>Technical Description</b>	LC Multimode Fiber Connector, Beige
<b>Port Count</b>	1
<b>Package Quantity(Imperial)</b>	1
<b>Package Quantity (Metric)</b>	1
<b>Customs Number</b>	8536700000