

## Specification Sheet

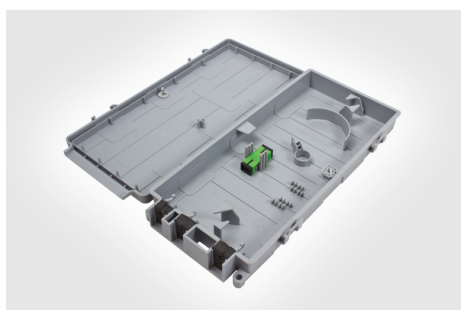
Part Number: CCE-1111TX-G

UV stable enclosure with IP54 (NEMA 3S) sealing rating for long-term outdoor performance.

Internal positive fiber management and fiber retention clips maintain a minimum 30 mm bend radius throughout, ensuring reliable data throughput.

Hinged lid allows quick and clear access to internal fiber for splicing and termination.

CCE is same width as a brick blow-out cover to mask any bricks damaged by drilling.



Customer Connection Enclosure, 1x SC/APC Adapter, Gray, 1/pkg

<b>Article Number</b>	857-01440
<b>Type</b>	CCE-A11121TX1/GY
<b>Color</b>	Gray (GY)
<b>Quantity Per</b>	EA

<b>Product Description</b>	<p>The Customer Connection Enclosure (CCE) is designed as a Building Entry Point (BEP) to provide a fiber termination and network demarcation point in a Fiber to the Home (FTTH) network. A loop-through facility allows single fiber elements to be removed and spliced while remaining fiber can be fed on to the next connection point. A single port in the rear allows fiber to be passed through the wall into the customer premises. Supplied cable ties secure all incoming/outgoing cables and blown fiber ducts and provide strain relief where necessary. The CCE can be supplied pre-loaded with fiber adapters and pigtailed as required. •2x SC Simplex/LC Duplex customer connections •4x heat shrink splices •6x incoming/outgoing ports and through-the-wall port •Suitable for cables or ducts up to a maximum diameter of 7 mm •Store up to a maximum of 50 m of 1.1 mm cable</p>
<b>Short Description</b>	Customer Connection Enclosure, 1x SC/APC Adapter, Gray, 1/pkg
<b>Global Part Name</b>	CCE-A11121TX1/GY
<b>Technical Description</b>	<p>The Customer Connection Enclosure (CCE) supports a maximum 2 x SC Simplex or LC Duplex adaptors. The closure is manufactured from UV stable ABS with a hinged lid which locks in the open position to allow for quick and clear access to the internal fibre. The closure has 6 entry/exit ports at the bottom of the closure which are suitable for cables and ducts up to a maximum diameter of 8.5mm. A loop through facility allows for single fibre elements to be removed and spliced whilst the remaining fibres can be fed on to the next connection point. A single port in the rear of the closure allows for fibre to be passed through the wall into the customer premises. Mechanical fixing is provided to secure all incoming/outgoing cables/blown fibre ducts and to provide strain relief where necessary. Internal positive fibre management and fibre retention clips maintain a minimum 30mm bend radius throughout for up to a maximum of 50m of 1.1mm diameter cable.</p>
<b>Contents of pkg/kit</b>	CCE Enclosure, Gray Foam Sealing grommets 3x Wall mounting screw and anchor 3x Red cable tie Phillips screw lock 1x SC/APC SM Adapter
<b>Variant</b>	Outdoor FTTx Enclosures

**Width W (Imperial)** 5.12

**Width W (Metric)** 130

**Height H (Imperial)** 10.35

**Height H (Metric)** 263

**Depth D (Imperial)** 1.46

**Depth D (Metric)** 37

**Material** Acrylonitrile Butadiene Styrene, UV-stabilized (ABSUV)

**Material Shortcut** ABSUV

**Package Quantity (Imperial)** 20

**Package Quantity (Metric)** 20

**Customs Number** 8536700000