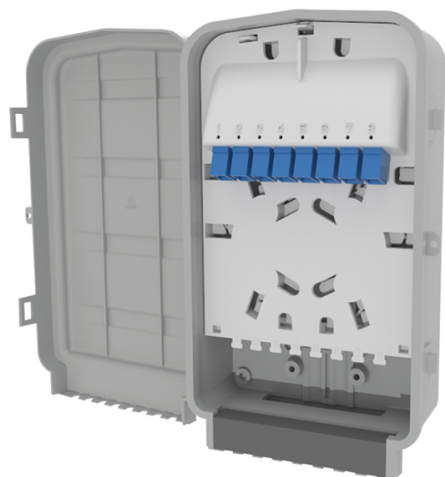


## Specification Sheet

Part Number: MDU-S1-2SSP



S1 Enclosure, 7–10 mm, SC-PC Simplex, With Adapters And Pigtails Installed, Gray, 1/pkg

<b>Article Number</b>	857-01521
<b>Type</b>	MDU-S1-02SC08SA1
<b>Color</b>	Gray RAL 7035 (7035)
<b>Features &amp; Benefits</b>	<ul style="list-style-type: none"><li>•Entry port is sealed to maintain the IP55 (NEMA 4) rating for long-term outdoor performance.</li><li>•Internal positive fiber management maintains a minimum 30 mm bend radius throughout, ensuring reliable data throughput.</li><li>•A cover prevents access to the network cables and splicing area.</li></ul>
<b>Quantity Per</b>	EA

**Product Description**

The S1 enclosure is designed for wall-mounted distribution, featuring separate areas for inbound cable, fiber splice management and drop cable (customer connection) management. The inbound cable management area has a dedicated cable entry port, supporting both cable end and mid-span applications with loop storage capacity for up to 1.5 m of excess fiber. The tray features a crossover facility allowing for alternative routing direction and a fiber storage capacity of 1.5 m of 250µm fiber and 1.0 m of 900µm fiber. Inside drop cable management area can accommodate a PLC splitter (60 mm x 7 mm x 4 mm). Adapters are angled and spaced to allow for inspection prior to connection. Eight anchor guides are provided for securing the drop cables (maximum diameter 6.0 mm). • 2 Inbound/pass-thru and 8 Drop cables • 8x SC or LC adapters and internal fiber pigtailed for connection to incoming cable and industry standard pre-terminated drop cables • 24 heat shrink fiber splice capacity • Separation of inbound fiber from splicing and connectorized drop cables

**Short Description**

S1 Enclosure, 7–10 mm, SC-PC Simplex, With Adapters And Pigtails Installed, Gray, 1/pkg

**Global Part Name**

MDU-S1-02SC08SA1

**Technical Description**

A 241 x 154 x 72mm (H x W x D) enclosure manufactured from UV stable light grey (RAL7035) polycarbonate and has an IP55, IK08 and V0 rating. The enclosure has 3 separate management areas for inbound cable, fibre splice management and drop cable (customer connection) management. The inbound cable management area has a dedicated cable entry port which supports both cable end and mid-span applications with loop storage capacity for up to 1.5m of excess fibre and the entry port is sealed with a cable entry kit (cable diameter 7mm - 10mm) to maintain the IP55 rating. The fibre splice management area has capacity for a maximum of 12 x 3A splices and maintains positive fibre management (30mm minimum bend radius) throughout and is fitted with 8 SC PC pigtailed. The tray has a crossover facility which allows for alternative routing requirements and a fibre storage capacity of 1.5m of 250µm fibre and 1.0m of 900µm fibre. The drop cable management area is fitted with 8 SC PC Simplex adaptors for connection to industry standard pre-terminated drop cables. A PLC splitter (60mm x 7mm x 4mm) can be fitted on the inside of the management area. The drop cable management area cover prevents access to the network cables and splicing area and the adaptors are angled and spaced to allow for inspection prior to connection. Eight anchor guides are provided for securing the drop cables (maximum diameter 6.0mm) and an integral seal maintains the IP55 rating.

**Port Count**

8

**Variant**

Indoor/Outdoor FTTx Enclosures

<b>Width W (Imperial)</b>	6.1
---------------------------	-----

**Width W (Metric)** 154

<b>Height H (Imperial)</b>	9.49
----------------------------	------

**Height H (Metric)** 241

<b>Depth D (imperial)</b>	2.83
---------------------------	------

**Depth D (metric)** 72

<b>Material</b>	Polycarbonate (PC)
-----------------	--------------------

**Material Shortcut** PC

<b>Package Quantity(Imperial)</b>	1
-----------------------------------	---

**Package Quantity (Metric)** 1

<b>Weight (Metric)</b>	0.586
------------------------	-------

**Weight (Imperial)** 1.29

