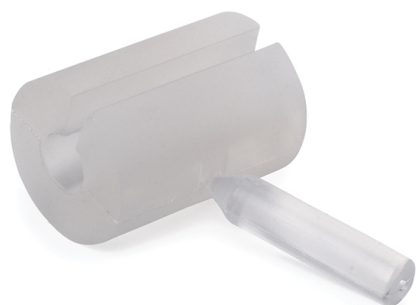


## Specification Sheet

Part Number: CS-P280-020



Split grommet accommodates installation over pre-terminated cables. IP-68 compliant seal protects 4-6 mm cable entry, preventing water damage.

Integral grommet sealing pin provides water seal when cable is not installed.

CCP Entry Seal with Plug, Dia 4.0 - 6.0mm, Clear, 1/pkg

**Article Number**

857-40590

**Type**

CABLE-SEAL-P280-020

**Color**

Semi-transparent white (WHCL)

**Product Description**

The CCP entry seals provide dust and water protection for the cable entering and exiting the CCP cable ports. The CCP is provided with a 4-6mm split seal with a sealing pin to provide protection with or without a cable installed. This is a replacement split seal for the CCP to be used with 4-6mm diameter cable. Seal is pre-split to install over pre-terminated cable end. Seal will maintain the IP-68 sealing requirements.

**Short Description**

CCP Entry Seal with Plug, Dia 4.0 - 6.0mm, Clear, 1/pkg

**Global Part Name**

CABLE-SEAL-P280-020

**Package Quantity (Imperial)** 1

**Package Quantity (Metric)** 1