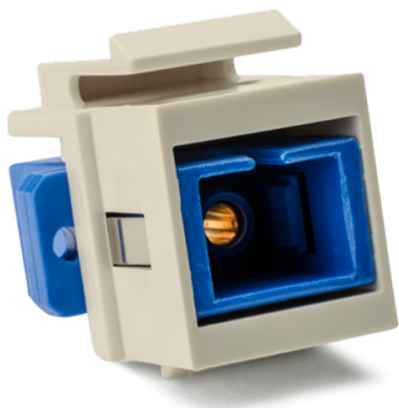


Specification Sheet

Part Number: SCSMINSERT-I



SC Singlemode Fiber Insert, Blue, Ivory, 1/pkg

| | |
|--------------------------------|---|
| Article Number | 904-00755 |
| Type | SCSMINSERT-I |
| Color | Ivory (IV) Blue (BU) |
| Features & Benefits | <ul style="list-style-type: none">• All single mode, single mode angled and multimode 10 Gb inserts feature durable zirconia ceramic ferrules, which allow for frequent, repeated insertion.• All standard multimode inserts feature phosphor bronze ferrules, which provide an affordable insert option.• Color coded for easy fiber selection.• Meet ANSI/TIA/EIA 568-B standards.• Meet ANSI/TIA/EIA 604 (FOCIS) connector interface requirements. |
| Quantity Per | bag |

| | |
|-----------------------------------|---|
| Product Description | Fiber inserts provide the final connection when using fiber as a digital loop carrier, or fiber-to-the-x solution. HellermannTyton offers a variety of fiber inserts with industry standard LC, SC, ST and MTRJ connections that can be used with HellermannTyton standard flush wall plates. |
| Short Description | SC Singlemode Fiber Insert, Blue, Ivory, 1/pkg |
| Global Part Name | SCSMINSERT-I-PL-BGE/BU |
| Technical Description | SC Single Mode Fiber Insert, Blue, Ivory |
| Material | Plastic (PL) |
| Material Shortcut | PL |
| Package Quantity(Imperial) | 1 |
| Package Quantity (Metric) | 1 |
| Customs Number | 8536700000 |