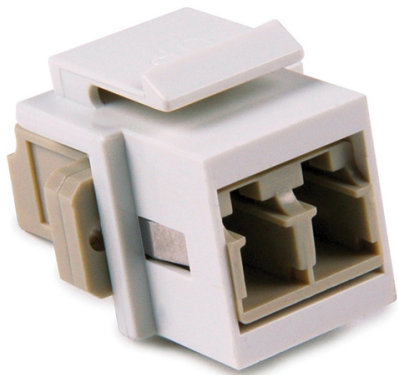


## Specification Sheet

Part Number: LCMMINSERT-W



LC Multimode Fiber Module, Beige, White, 1/pkg

<b>Article Number</b>	904-00759
<b>Type</b>	LCMMINSERT-W
<b>Color</b>	White (WH) Beige (BGE)
<b>Features &amp; Benefits</b>	<ul style="list-style-type: none"><li>• All single mode, single mode angled and multimode 10 Gb inserts feature durable zirconia ceramic ferrules, which allow for frequent, repeated insertion.</li><li>• All standard multimode inserts feature phosphor bronze ferrules, which provide an affordable insert option.</li><li>• Color coded for easy fiber selection.</li><li>• Meet ANSI/TIA/EIA 568-B standards.</li><li>• Meet ANSI/TIA/EIA 604 (FOCIS) connector interface requirements.</li></ul>
<b>Quantity Per</b>	box

<b>Product Description</b>	Fiber inserts provide the final connection when using fiber as a digital loop carrier, or fiber-to-the-x solution. HellermannTyton offers a variety of fiber inserts with industry standard LC, SC, ST and MTRJ connections that can be used with HellermannTyton standard flush wall plates.
<b>Short Description</b>	LC Multimode Fiber Module, Beige, White, 1/pkg
<b>Global Part Name</b>	LCMMINSERT-W-PL-BGE/WH
<b>Technical Description</b>	LC Multimode Fiber Module, Beige, White
<b>Material</b>	Plastic (PL)
<b>Material Shortcut</b>	PL
<b>Package Quantity(Imperial)</b>	1
<b>Package Quantity (Metric)</b>	1
<b>Customs Number</b>	8536700000